

**Live life ... uninterrupted ...
around-the-clock**



www.su-kam.com

FALCON
SINE WAVE UPS

600VA - 1400VA



FALCON 1400VA/24V

Copyright © 2010 Su-Kam Power Systems Ltd.



FALCON 600VA/12V

Design Registration No.: 530,
Copyright © 2010 Su-Kam Power Systems Ltd.



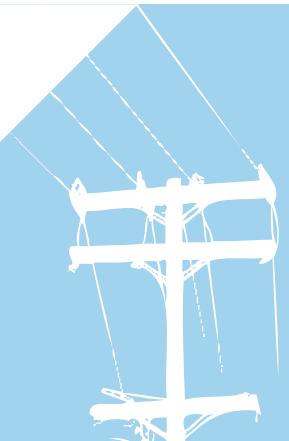
FALCON 800VA/12V

Design Registration No.: 530,
Copyright © 2010 Su-Kam Power Systems Ltd.



Provides 100% pure Sine Wave output – purer than power from the grid

Based on a high-end microcontroller technology the FALCON provides Pure Sine Wave output that is essentially the same as utility-supplied grid power. Which is 100% clean, regulated, completely stable and distortion free and absolutely safe for running the most sophisticated and sensitive appliances ... silently.



Instant switchover

In the event of a power failure, the switch over process to battery mode takes just a few milliseconds. Which means that the power supplied to connected appliances, like computers is not interrupted, thus also avoiding the chances of system's rebooting. In UPS mode you may power up your computer and sophisticated appliances.



Automatic overload regulation

In case of overload the Su-Kam's Falcon UPS resets itself automatically to turn on again. The system will retry 8 times to run the existing load. Moreover, the sound of repeated beep alarm gives the user adequate time to reduce the load without having to shut down the system. So the user will not have to go to the UPS to reset. In case the load is still not reduced the system will shut down automatically to save you from any losses.



System and appliances fully protected

FALCON's superior HCLC (High Cut / Low Cut) Technology provides complete and constant protection to your appliances in case of any irregularities or disturbances in the grid supply. These include any short circuits, high voltage, low voltage or overloads. Your expensive and sensitive equipment like TVs, home theatres, satellite dishes, computers, printers, copiers and fax machines are spared from damage, thus increasing their longevity.



Highly energy efficient

The FALCON is equipped with an SMPS-based charger, which has the highest power factor. This minimizes the amount of AC power required to charge the batteries, thereby reducing your power consumption considerably. The SMPS charger also provides ripple free DC supply to the batteries, hence enhancing battery life.

It is also smaller in size, and generates less heat.



Huge Savings on Electricity

Su-Kam's FLC Technology senses the battery voltage and switches off the charger if there is no change in the battery voltage with respect to time, whereas the charger in normal inverter is constantly on. This leads to reduced energy consumption, hence saving on electricity bill.



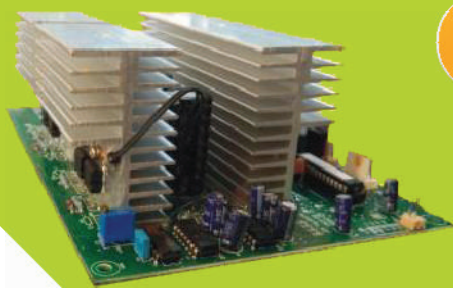
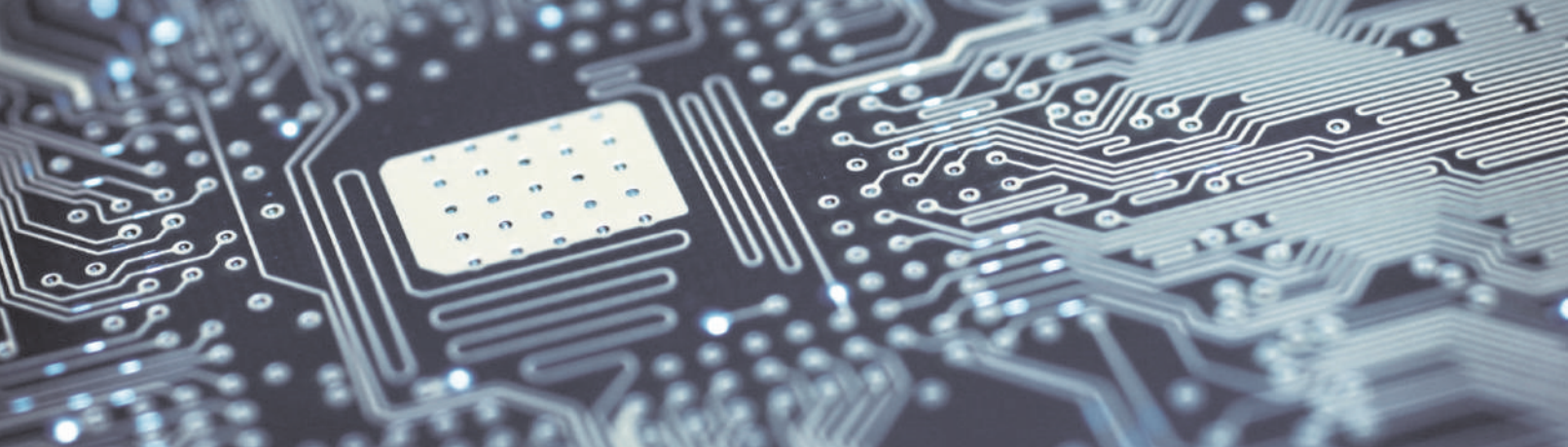
Longer Battery Life

Su-Kam's FLC Technology senses the exact need of the battery every time. If an older battery is unable to accept the level of voltage defined earlier, it automatically sets a new level in accordance with the battery condition and charging need. This leads to enhanced battery life.



Reduced Water Topping

Su-Kam's FLC Technology controls the emission of gases while charging the battery, thus reducing the frequency of water topping significantly.



SMD Technology (Surface Mount Device)

The PCB card is based on Surface Mount Device Technology and reduces human error while manufacturing. Systems based on this SMD technology are more efficient than other conventional systems.

Compatibility with batteries



Two way slider switch gives you the option to select any battery type & charging.

- LA • SMF • Tubular

For better performance use Su-Kam batteries.

UPS mode/Wide UPS mode



The two-way slider selection switch gives you the option to select the system mode. You can select

UPS mode for sensitive appliances like TVs, monitors, scanners or Wide UPS mode for tubelights, fans, room coolers and refrigerators.

User-friendly graphical display with audible alerts

FALCON's bright graphical displays equipped with an audible alarm keeps you informed and alert about the system's condition.



Load Chart

FALCON 600VA/12V			
Load	A	B	C
PC	1		
TV			1
Tube light	2	4	4
Fan	2	3	2
Room Cooler			

FALCON 800VA/12V			
Load	A	B	C
PC	1		
TV			1
Tube light	3	2	4
Fan	3	3	4
Room Cooler		1	

FALCON 1400VA/24V			
Load	A	B	C
PC	1		
TV			1
Tube light	7	6	8
Fan	7	6	8
Room Cooler		1	

Indicative values only, actual calculation depends on manufacturer specifications. PC upto 150W, Tube Light of 40W, CFL of 11W, TV - 19-21", Ceiling Fan 48mm (3 Blades, 100-200mm sweep) and Room Cooler - 200W

Su-Kam Power Systems Limited

Certifications



Office : 15 floor, The Pride Building, An Hung Urban, Hadong Dist, Hanoi City, Vietnam

Tel: +84 (4) 6259 1211 Fax: +84 (4) 6664 2221

Email : info@sigmavn.vn • Website: www.sigmavn.vn